

Elisabethenanlage, Basel

Chronicle of the trees

Client

Baudepartment des Kantons Basel-Stadt

Architecture

Christ & Gantenbein, Basel

Art

Erik Steinbrecher

Work stages

The 2001 competition with prequalification: 1st prize with continued elaboration of all work stages

Period

2001–2007

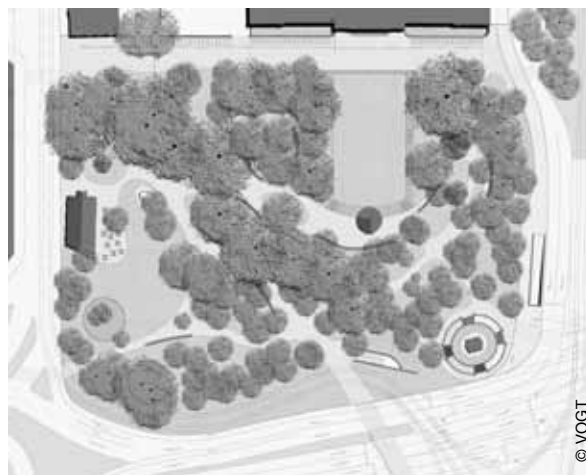
Area

20'000 m²

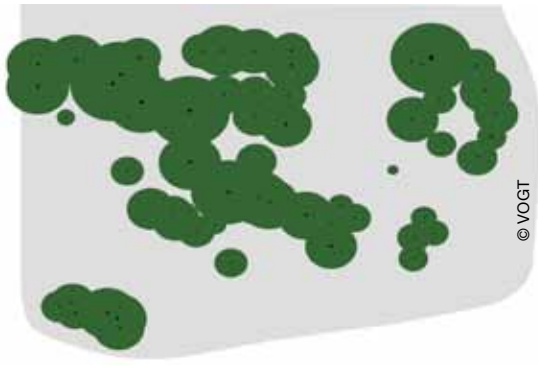
Today's Elisabethenanlage is the product of continuous development of the free space on the remains of the ancient town fortification of Basel. In centuries of structural and design alterations Elisabethenanlage has become a unique hybrid of park and square. This hybrid is characterized by an unusual large number of paths compared to the surfaces covered with lawn.

Other typical elements are small scale buildings like the pavillon and last but not least a small but valuable stock of old trees. The existing, soft terrain modelling is continued over the entire perimeter. Additional paths meander through this terrain, their course

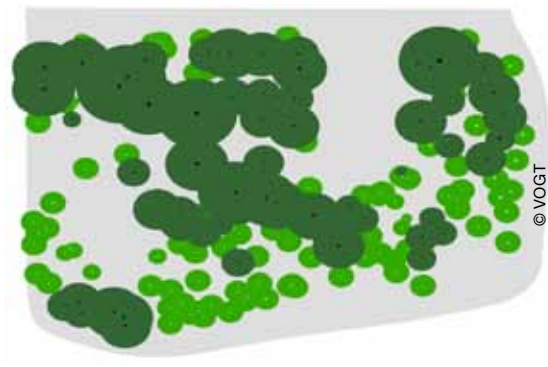
naturally resulting from the surface modelling. The concept for materials and textures as well as the choice of trees refer to the existing park. Banks and a waterbasin specifically designed for Elisabethenanlage complete the park. The new park is a free space opening outwards, defining the existing structures more precise and adapting it to the needs of our time.



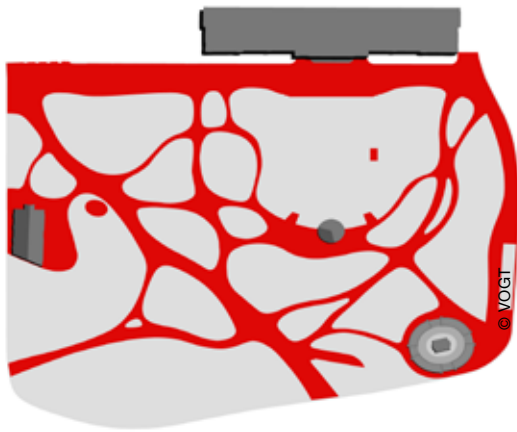
Plan view



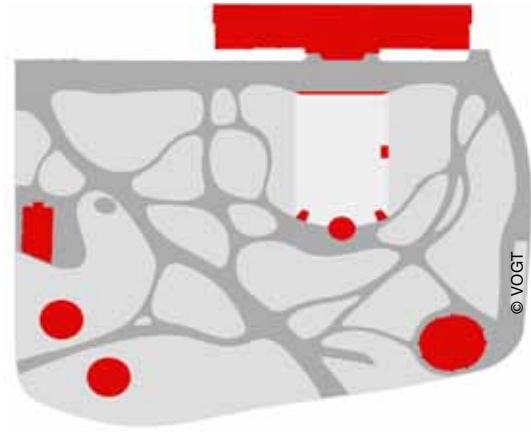
Tree population



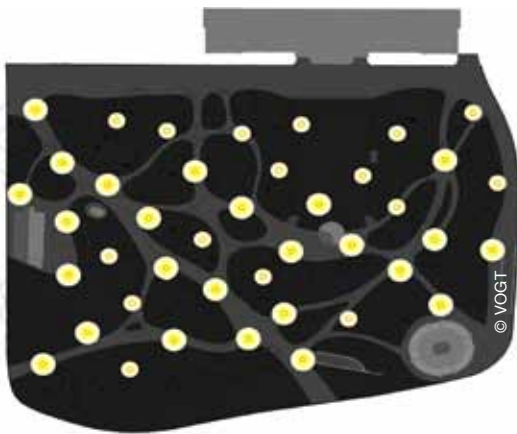
New tree population



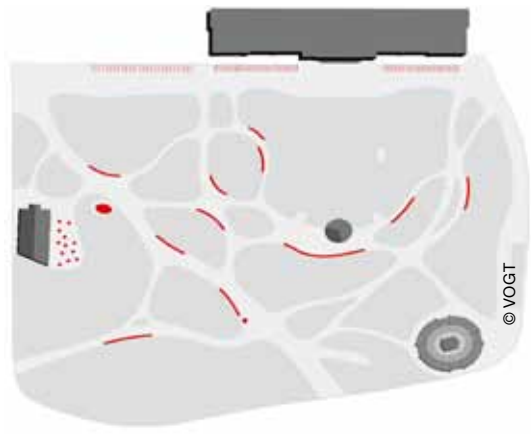
Pathways



Fixtures



Lighting



Furnishings



